

The ecoBolt Monitoring System

STEAM TRAPS
MADE INTELLIGENT

The ecoBolt is a sensor fitted to a steam trap, designed for effective online monitoring of steam systems, used in heat exchangers, steam tracers and steam line drainage systems (up to DN 65 / 2 1/2") and backed by a dedicated expert online support service.



BK with ecoBolt MSB-1 Ex

Product Features

- Pipe sizes from DN 15 (1/2") to DN 65 (2 1/2")
- Surface temperatures up to 240°C
- Reliable status diagnostics and inherent steam know-how
- Compatible with proven TRAPtest VKP measurements
- Certified to ATEX
- Suitable for pressure ratings up to PN 40 / Class 300
- Available for steam systems made of carbon steel or stainless steel
- Calibration certification included
- Battery powered
- ecoBolt integration in IoT platform using LoRa wireless technology

Product Benefits

- GESTRA steam expert support available
- Use of tried and tested steam trap monitoring process
- Sensor directly attached to bolt on steam trap body ensures best signal to noise ratio
- Robust, bolted connection of sensor to steam trap. Flexible clamp mounting on pipes optionally available
- 90° adapter allows flexible sensor mounting in confined spaces

YOUR BENEFITS

- Cost reduction thanks to immediate detection of steam leaks.
- Quickly discover undersized or blocked steam traps.
- Monitor steam trap performance under varying process conditions.

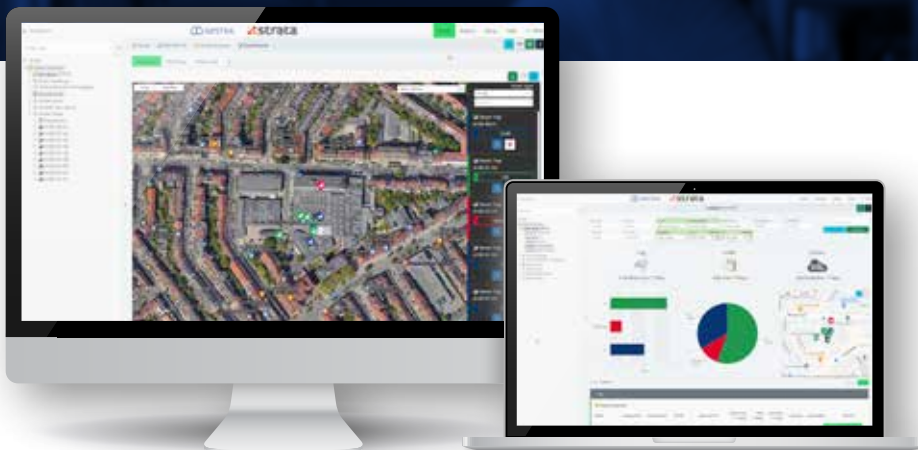
The ecoBolt monitoring system:

FUNCTION

The equipment monitors steam traps using ultrasonic and temperature measurements by a piezo element. These measurements are performed automatically at regular intervals. The measured data is analysed in the LoRa node and transferred to the LoRa gateway (accessory). The data is transferred by LoRa wireless technology via network protocol. The measurement results are analysed on the basis of the sound and temperature values and parameters of the steam trap under test.

MSB APP

- Fast and efficient support during installation and maintenance of the continuous steam trap monitor
- Transfers metadata to the installed equipment and guarantees confusion-proof integration in the GESTRA IoT platform
- A data connection is required for loading the MSB app and for transferring data (Wi-Fi or SIM card).



Steam Trap Monitoring System

PERFORMANCE PROFILE

Continuous steam trap monitor for steam traps (e.g. GESTRA BK, MK and UNA)

- Readings are analysed inside the equipment
- The LoRa payload includes test and analysis results
- Connection to the LoRa network server via LoRa wireless technology
- Option: Presentation of test and analysis results on the GESTRA IoT platform. To do this, the LoRa network server is connected to the GESTRA IoT platform via MQTT protocol.

AVAILABLE ACCESSORIES

The following accessories are available for the equipment:

- Pressure-bearing screws made of steel or stainless steel
- Clamps for mounting on pipes
- Mounting system for pre-amplifier and LoRa node
- LoRa gateway
- Further accessories are available on request.



GESTRA AG

Münchener Str. 77 · 28215 Bremen · Germany
P.O. Box 10 54 60 · 28054 Bremen · Germany

Tel. +49 421 3503-0
Fax +49 421 3503-393

info@de.gestra.com
www.gestra.com

850952-01/06-2024sxs_rh GESTRA AG Bremen Subject to technical modifications
© Copyright 2024. GESTRA is a Spirax Group Company

SB-GGE-19-EN-ISS2

