

TA 10 programme-controlled blowdown system with PRS 10 cycling timer on solenoid valve

Programme-controlled blowdown system TA 10

System description

The TA 10 electronic programme-controlled blowdown system triggers periodic blowdowns for the MPA ... intermittent blowdown valve.

The TA 10 programme-controlled blowdown system is suitable for GESTRA MPA ... intermittent blowdown valves.

It is used in steam boiler plants for keeping the boiler water in good condition, particularly during operation when supervision is limited or not constant.

The TA 10 programme-controlled blowdown system consists of an electronic cycling timer with connector, a 3/2-way solenoid valve, a strainer and a reducer.

Medium

■ Solenoid valve control medium: Compressed air or pressurised water, 4 – 8 bar depending on the rapid-action blowdown valve and the boiler pressure (see MPA...)

Potentially explosive atmospheres

The TA 10 equipment is not suitable for use in potentially explosive atmospheres.

Function

The PRS 10 cycling timer generates a control pulse that operates the solenoid valve. The solenoid valve allows in compressed air or pressurised water, so that the intermittent blowdown valve opens quickly and closes again after the pulse time.

The pulse times and intervals can be adjusted on the display.

The three-way solenoid valve can also be operated manually for checking purposes or in the event of power failure. You can test the blowdown system at any time using the button on the solenoid valve.

Technical data

PRS 10 cycling timer

Interval time t_{off}

Adjustable from 0.01 sec. to 99 h

Pulse duration t_{on}

Adjustable from 0.01 sec. to 99 h

Display and operation

- LED display
- 3 buttons
- 4 LED

Supply voltage

110 V – 240 V, 50 – 60 Hz
or 10-48 V, 50 – 60 Hz

Protection class

IP 65

Admissible ambient temperature

1 °C to 55 °C

Connector

Cable gland: \varnothing 4.5... \varnothing 10.0 mm
Screw terminals: 0.25 mm² ... 1.5 mm²

Technical data – continued –

2/3-way solenoid valve 6430 C

Mechanical connection

G ¼, EN ISO 228-1

Service pressure

16 bar

Differential pressure for opening and closing

At least 0.5 bar

Duty cycle

100 % ED

Installation position

Any

Connection symbols

P = pressure connection

A = valve outlet

R = exhaust or drain outlet

Supply voltage (+/- 10 %)

■ 24 V DC 8 W

or optionally

■ 230 V, 50 Hz, 15 VA, after pick-up 30 VA

Protection class

IP 65

Admissible ambient temperature

Max. 55 °C

Weight

Approx. 0.9 kg

Strainer

Connection

G ½, EN ISO 228-1

Material

Housing MS 58

Filter cartridge 1.4571

Mesh width

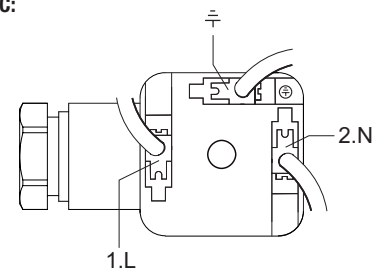
0.5 mm

Weight

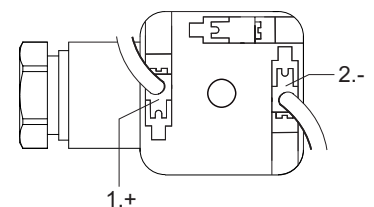
Approx. 0.3 kg

Wiring diagram

AC:

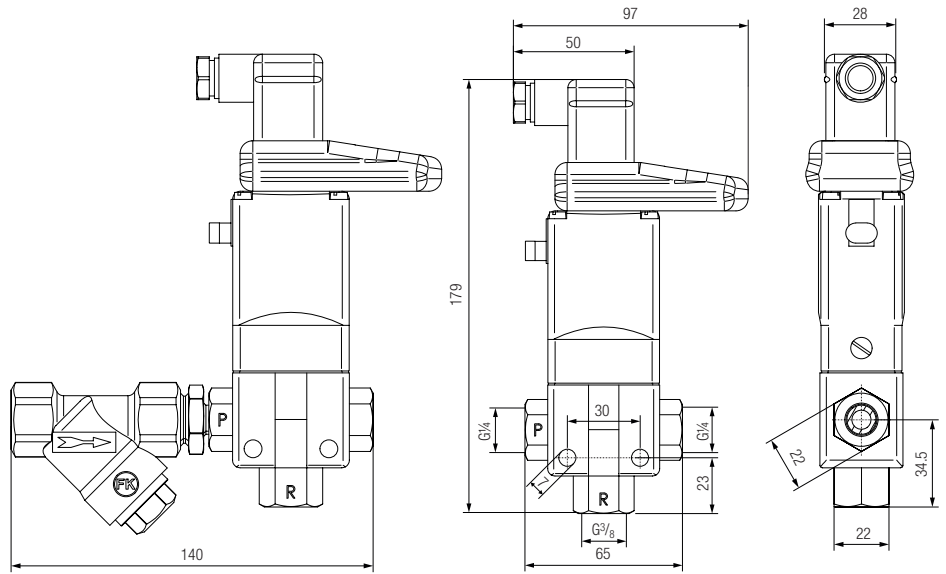


DC:

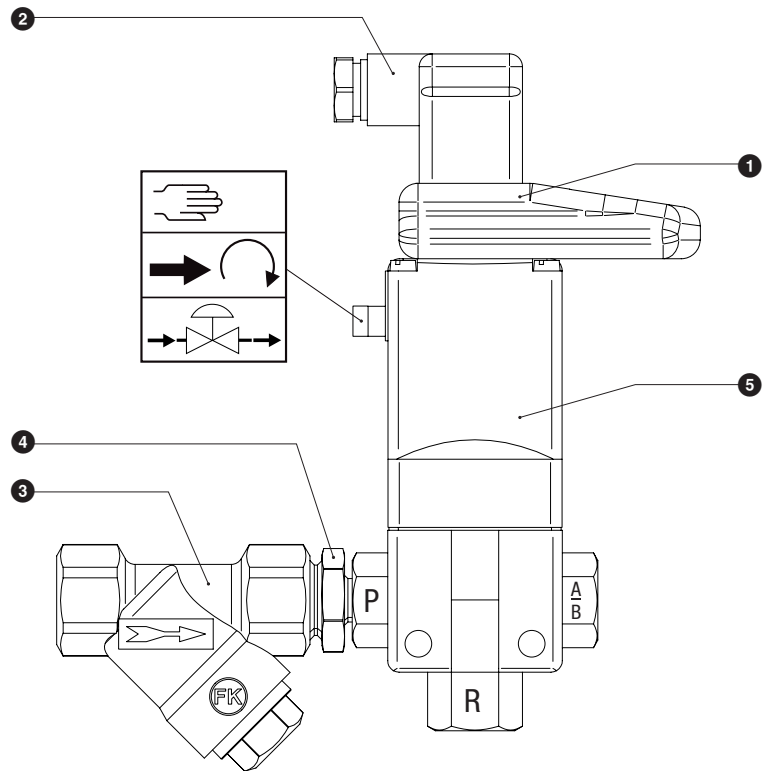


Programme-controlled blowdown
system
TA 10

Dimensions



No.	Designation
1	PRS 10 cycling timer
2	Connector
3	Strainer
4	Reducer
5	3/2-way solenoid valve



Important notes

A 3-core cable measuring max. 1.5 mm² in diameter is required for connection to the cycling timer.

How to order and specify

GESTRA TA 10 programme-controlled blowdown system with PRS 10 cycling timer, 6430 C 2/3-way solenoid valve and strainer. Supply voltage ... V.

Please note our general terms of business.

GESTRA AG

Münchener Straße 77, 28215 Bremen, Germany
Tel. +49 421 3503-0, Fax +49 421 3503-393
e-mail info@de.gestra.com, website www.gestra.com

